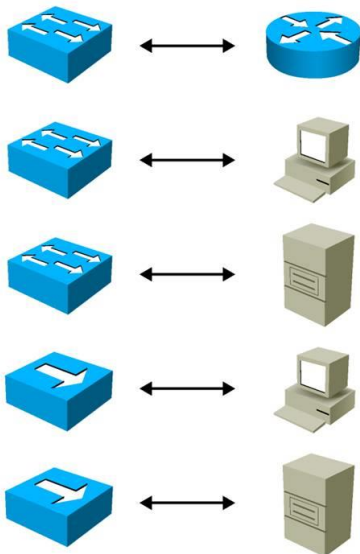
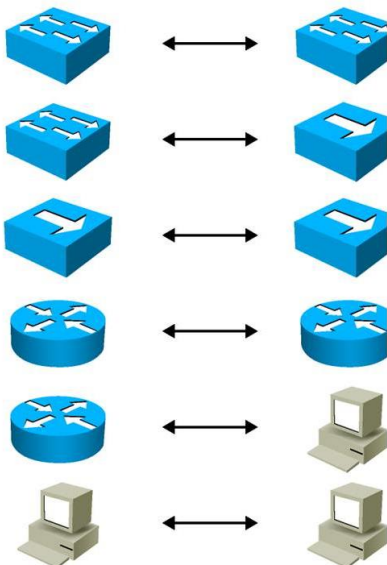


Straight-Through Cable



Switch – Router
Switch – PC
Switch – Server
Hub – PC
Hub – Server

Crossover Cable



Switch – Switch
Switch – Hub
Hub – Hub
Router – Router
Router – PC
Router – Server
PC – PC

But nowadays the standard is becoming obsolete due to the fact that Auto-MDIX (automatic medium dependent interface crossover) technology on devices grows with each device that supports it. This means that ports do not need to know what type of cable is used when you connect two devices.

Rollover cable → CONSOLE (PC with Router or Switch for CLI configuration - Cyan color)

Serial cable → WAN Connection with Clock Rate 64000, 128000 Kbps on one side.